



شركة ديكو مصر للإنشاءات الحديثة

Casting Machinery in our platform Power-Sprays Tech-Uk

with compliance to



+2001222372871 / +2001068848737

+2026203583 / +2026204235

M.Youness@dekoegypt.com

2C Masr Gedida Iskan Buildings Mokaweloon
Arab st near gate 3 Shams Club.

www.dekoegypt.com

عنوان مصنع العاشر : العاشر من رمضان - المنطقة / C2 - مجمع الصناعات الصغيرة.

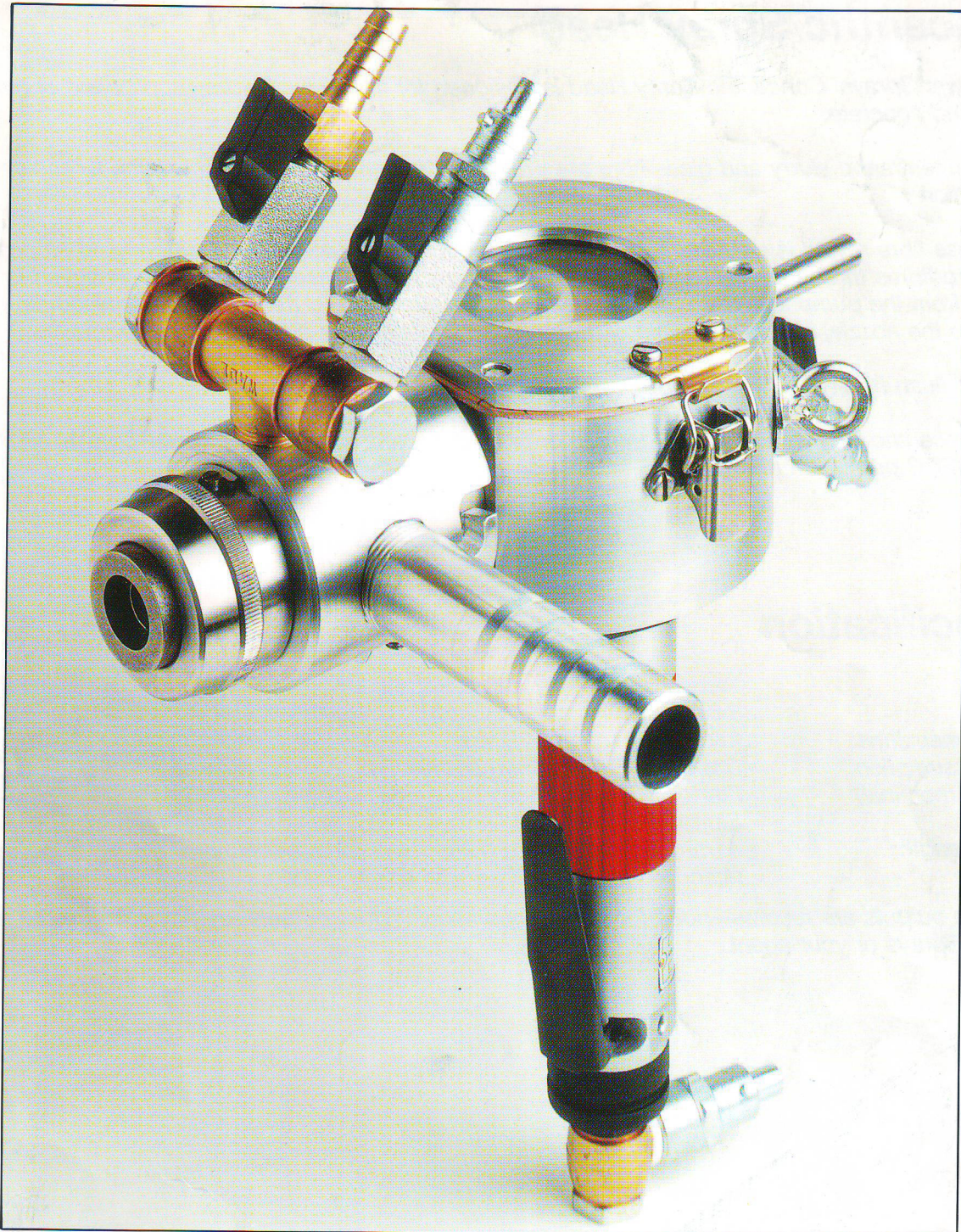
عنوان مصنع بليبس : مدخل غيتة - قرية السلام - بليبس الشرقية .

عنوان مصنع ستايل : طريق بليبس العاشر - من ميدان الطائرة - بجوار مخزن العلا للحديد والصلب



POWER-SPRAYS

Spring Rollers



POWER-SPRAYS

CONCENTRIC SPRAY GUN

Concentric Spray Head

The Power-Sprays' Concentric Spray Head is designed for the efficient spray application of glass fibre reinforced concrete.

Both cement/sand slurry and glass fibre are projected from the same nozzle helping to ensure good distribution.

The glass fibre roving is cut to length within the rear chopper mechanism. Compressed air propels the chopped fibres through the atomiser body to the nozzle. Simultaneously, slurry is conveyed to the nozzle from the pump and is emitted from an annulus surrounding the fibre. Compressed air, supplied direct to the nozzle, atomises the slurry and the two materials are projected as a composite.

A water flush facility is fitted as standard to be used as required.

The Concentric Spray Head is designed to operate in conjunction with the Power-Sprays' Mk9 series GRC/GFRC pumps. Further details available on request.

Specification

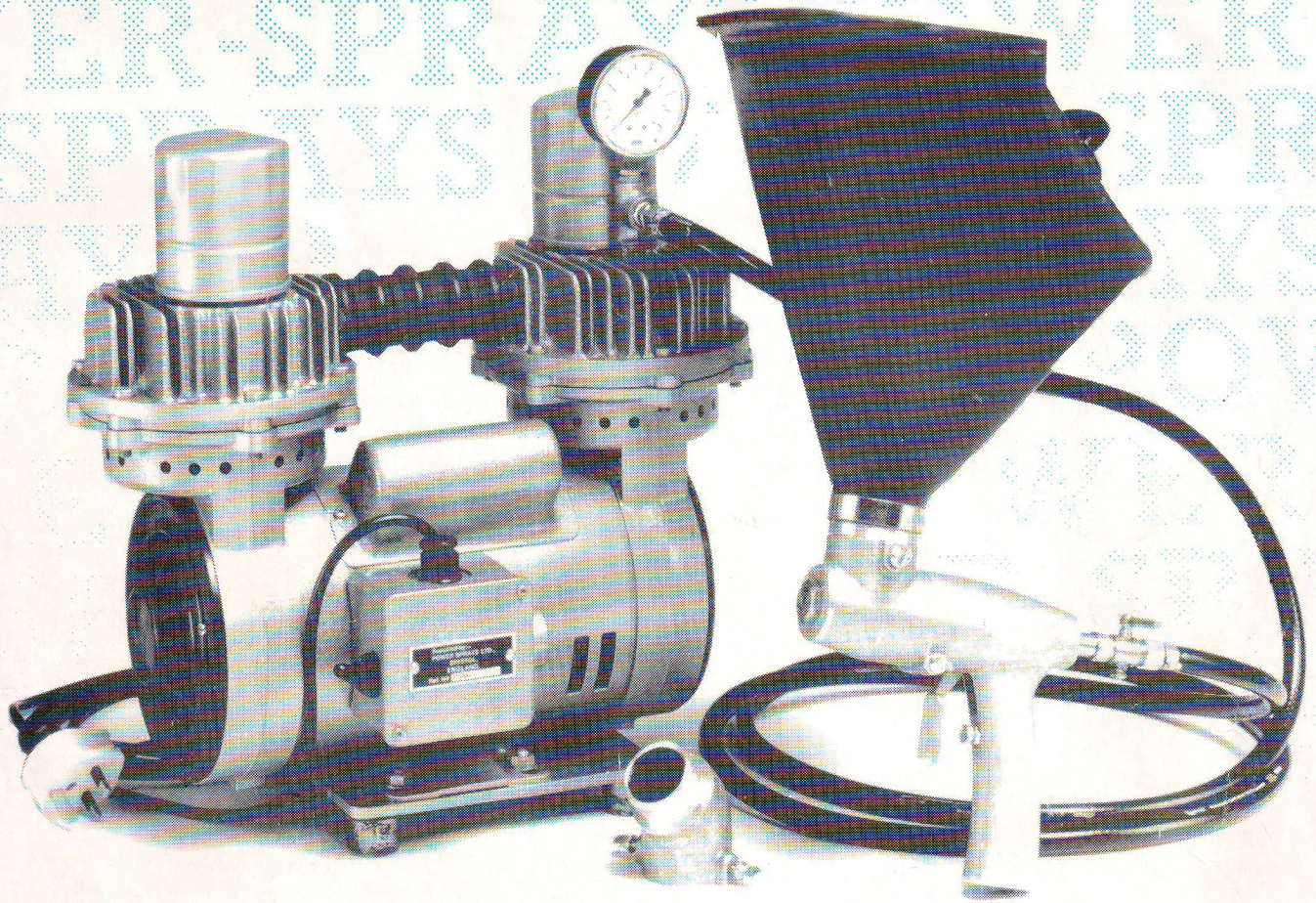
Weight:	3.5 kgs.
O/A Dimensions:	27cms x 21cms x 28cms.
Air Consumption:	50CFM (1500 ltrs/min) approx.
Output (nominal):	Fibre - 600 grms/min* Slurry - 12 kgs/min*.
Fibre Length:	41mm, 31mm, 25mm, 12mm and 6mm available (standard are units fitted with 31mm cutter).

* These outputs are recommended for normal operation. Higher outputs are possible. Please refer to Power-Sprays or your agent.

AVAILABLE FROM:



POWER-SPRAYS POWER-SPRAYS POWER-SPRAYS POWER-SPRAYS POWER-SPRAYS POWER-SPRAYS



POWER-SPRAYS

**POWER-TEX Mk III SPRAY GUN
AND
D2D COMPRESSOR**

Pri-mix

SERVICE INSTRUCTIONS FOR THE POWER-TEX Mk.III SPRAY GUN

OPERATION

The Power-Tex Mk.III Spray Gun is recommended for the application of decorative coatings (matt and textured finishes), vermiculite and perlite mixes, non-slip deck coatings, dry aggregates, etc.

1. Select the correct nozzle for the material/finish required from the following table:

MATERIAL	NOZZLE SIZE	MATERIAL	NOZZLE SIZE
Cement paints -	4 or 5 mm	Stone paints -	4 or 5 mm
Cementitious mixes	As required	Vermiculite and Perlite mixes	5 or 7 mm
Aggregate loaded resins	5 or 7 mm	Emulsion paints	4 mm
Aggregate size 3 mm	7 mm	Veneer and plaster finishes	As required

2. Fit the hopper (3) to the gun body (12). If spraying a floor or ceiling fit the elbow adaptor (5) as required. Do not over-tighten the securing thumbscrews (6, 13).
3. Connect an airline to the air cock (23). The airline should be 8 mm (5/16 inch) bore if under 15M (50 ft.) length. A larger bore may be necessary for longer air lines.
4. Connect the air line to the compressed air supply.
N.B. It is recommended that an oil-free compressor is used to avoid contamination of the material.
5. Ensure that the material to be sprayed is thoroughly mixed and free from any large particles which could block the gun's nozzle. Pour the material into the hopper.
6. Using the air pressure regulator on the compressor, set the air pressure to a slightly greater pressure than that required at the gun. Turn on the air cock and pull trigger.

OBTAINING DIFFERENT TEXTURES

7. By adjusting the position of the air tip (15) relative to the nozzle (10) and adjusting the air pressure, it is possible to obtain different texture effects. The type of material and the nozzle size will also influence the spray pattern and thus it is important to practice on a test area to find the correct combination. Once the desired effect is obtained, restrict the air tip position (15) using the trigger pull stop screw (21) and note the air pressure gauge reading at the compressor (with the air cock open).

Use the following as a guide:

- | | |
|--|--|
| SMOOTH FINISH/FINE SPRAY | - Use a high pressure with the air tip close to the nozzle |
| HEAVY TEXTURE/SPLATTER SPRAY | - Use a low pressure with the air tip 1-2 cm from the nozzle |
| SPRAYING LARGE PARTICLES OF DRY MATERIAL | - If the trigger movement is insufficient to allow enough clearance between the air tube tip (15) and the gun body front (12) for the material to flow into the air stream, adjust the air tube position (16) relative to the trigger (17) as follows: |

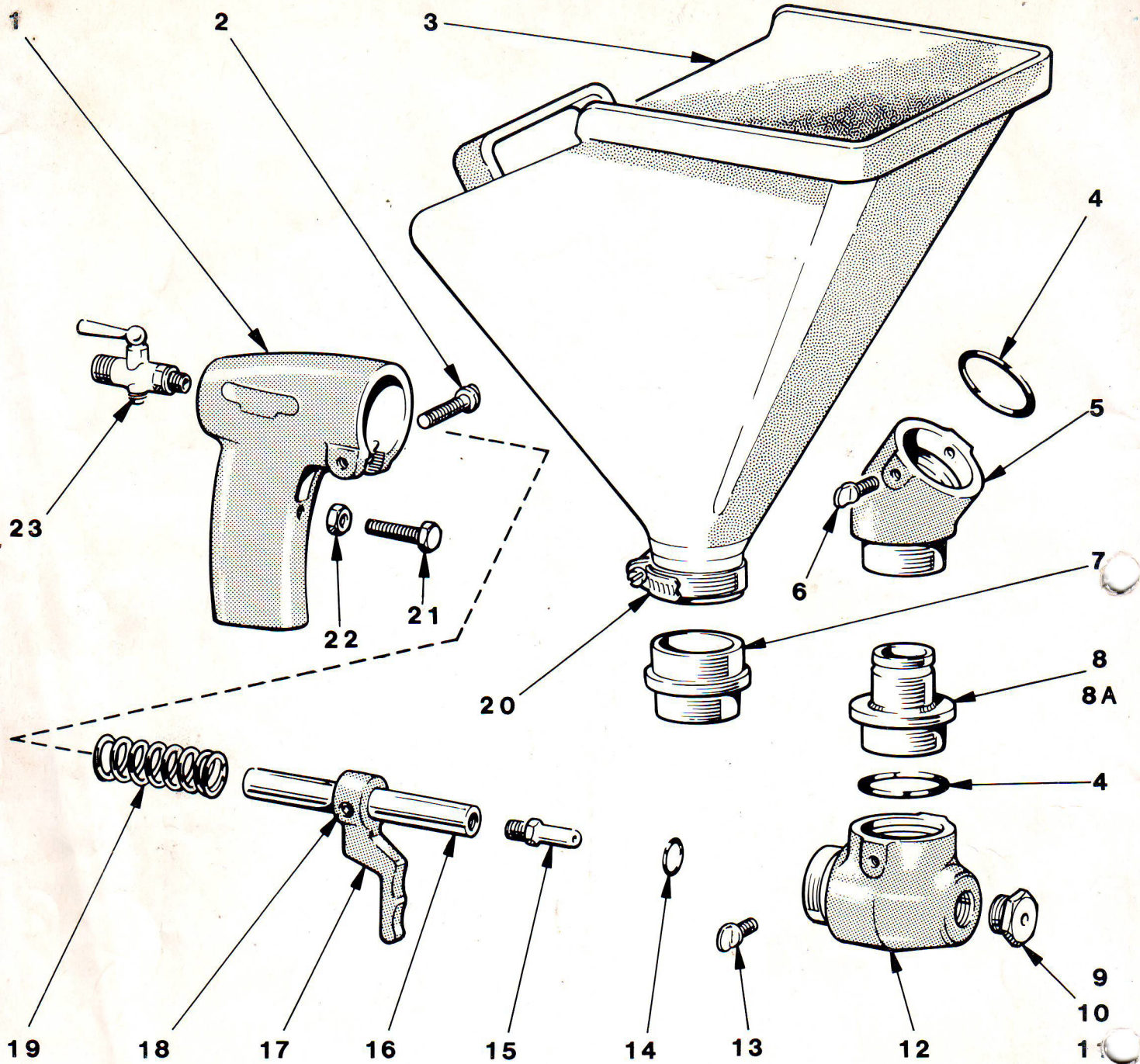
8. Using the allen key supplied, loosen the set screw (18) securing the trigger (17) to the air tube (16).
9. Slide the trigger along the air tube as required. Retighten the set screw (18).

CLEANING AND SERVICING

10. Remove the hopper and adaptor(s) (5,7). Undo the Body Locking Screw (2) and remove the Rotating Body (12). Clean all parts thoroughly.
11. Unscrew the air cock (23) and withdraw the Air Tube (16), Trigger (17) and Spring (19) from the gun body. Clean the exposed Air Tube and apply a small amount of petroleum jelly (Vaseline) or non-emulsifying grease.
12. Reassemble the gun.

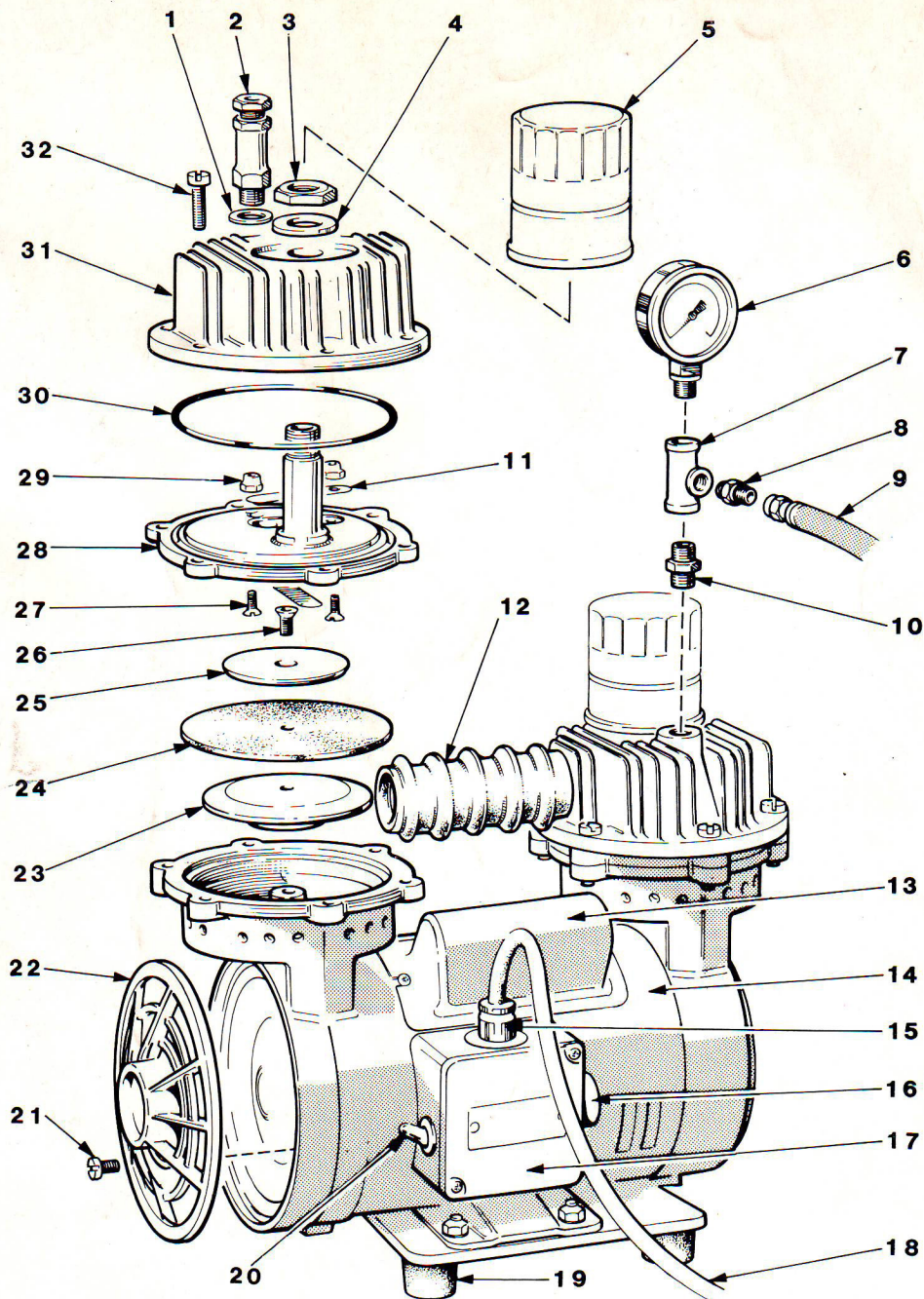
EYE PROTECTION MUST BE WORN WHEN USING THIS EQUIPMENT

Supplied by:



POWER-TEX MK.III SPRAY GUN — PARTS LIST

Item	Description	Part No.	Item	Description	Part No.
1	Gun Handle	PT8701	13	Thumbscrew	PT8713
2	Body Locking Screw	PT8702	14	'O' Ring (Small)	PT8714
3	Hopper	PT8703	15	Air Tube Tip	PT8715
4	'O' Ring (Large)	PT8704	16	Main Air Tube	PT8716
5	Elbow Adaptor	PT8705	17	Trigger	PT8717
6	Thumbscrew	PT8706	18	Set Screw	PT8718
7	Hopper Adaptor	PT8707	19	Spring	PT8719
8	Pressure Feed Adaptor (1 inch)	PT8708/0	20	Hopper Clamp	PT8720
8A	Pressure Feed Adaptor (1¼ inch)	PT8708/1	21	Trigger Stop Screw	PT8721
9	Nozzle - 4mm	PT8709	22	Trigger Stop Screw Locknut	PT8722
10	Nozzle - 5mm	PT8710	23	Air Cock	PT8723
11	Nozzle - 7mm	PT8711			
12	Rotating Front Body	PT8712			



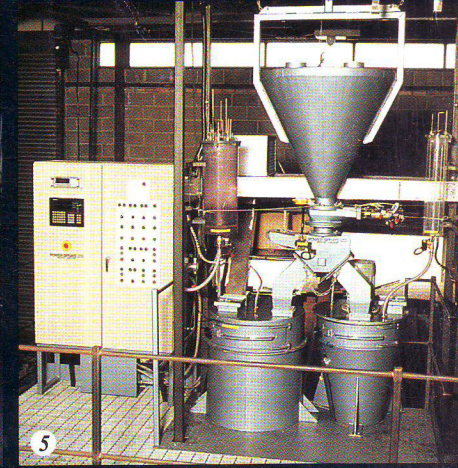
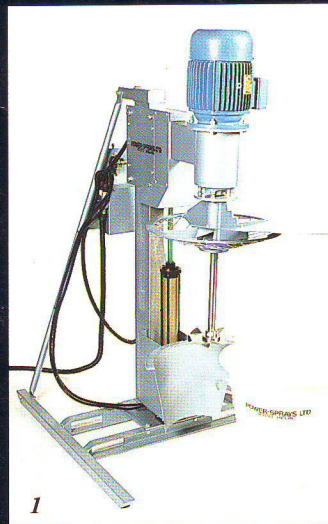
D2D COMPRESSOR PARTS LIST

<u>Item</u>	<u>Description</u>	<u>Part No.</u>	<u>Item</u>	<u>Description</u>	<u>Part No.</u>
1	Washer for Pressure Relief Valve	DD8701	17	Electrical Control Box	DD8717
2	Relief Valve	DD8702	18	Supply Cable	DD8718
3	Nut for Inlet Tube	DD8703	19	Rubber Foot	DD8719
4	Fibre Washer + 'O' Ring (not shown)	DD8704	20	On/Off Switch	DD8720
5	Filter	DD8705	21	Cover Retaining Screw	DD8721
6	Pressure Gauge	DD8706	22	End Cover	DD8722
7	T - piece	DD8707	23	Diaphragm Bottom Washer	DD8723
8	Airline Connector	DD8708	24	Diaphragm	DD8724
9	Airline (15M)	DD8709	25	Diaphragm Top Washer	DD8725
10	Outlet Connection	DD8710	26	Diaphragm Retaining Screw	DD8726
11	Outlet Valve Strip	DD8711	27	Valve Strip Retaining Screw	DD8727
12	Rubber Sleeve	DD8712	28	Valve Plate	DD8728
13	Capacitor	DD8713	29	Nyloc Nut	DD8729
14	Main Casing	DD8714	30	Valve Plate 'O' Ring	DD8730
15	Cable Gland	DD8715	31	Surge Chamber	DD8731
16	Thermal Overload Reset	DD8716	32	Surge Chamber Screw	DD8732

MIXING

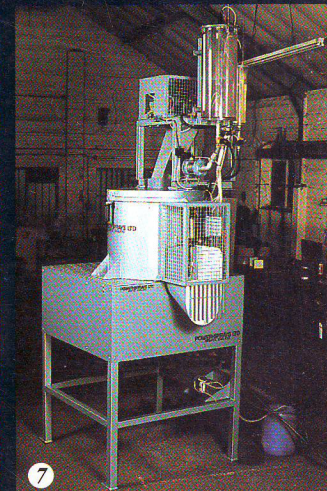
Power-Sprays builds a variety of mixing systems for the GRC processes. For Sprayed GRC High Shear mixers minimise water content and optimise matrix strength. For Premix GRC two stage mixers combine high speed slurry mixing with low speed blending of the chopped glassfibres ensuring an even distribution of reinforcement whilst minimising fibrillation.

Power-Sprays offers a range of mixers to match all production requirements, from hand fed manually operated units for smaller GRC factories to high output fully automated systems for larger production facilities.



Accessories including glassfibre choppers, automated water and liquids dispensers and dry materials batching systems are also available.

1. GRC 100 High Shear Mixer.
2. GRC 125 High Shear Mixer.
3. Continuous High Shear Mixer.
4. Automated Twin Mixing System.
5. Automated Twin Mixing System.
6. Economy-2 Premix GRC Mixer.
7. 100 Series Premix GRC Mixer Module.

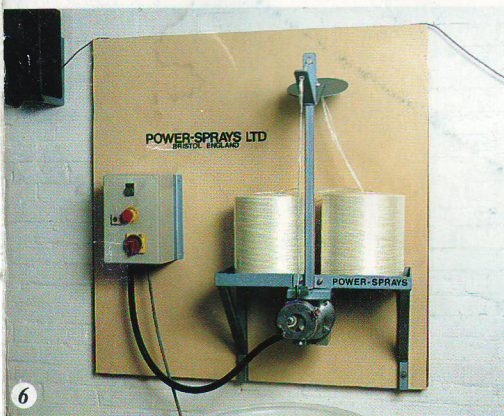
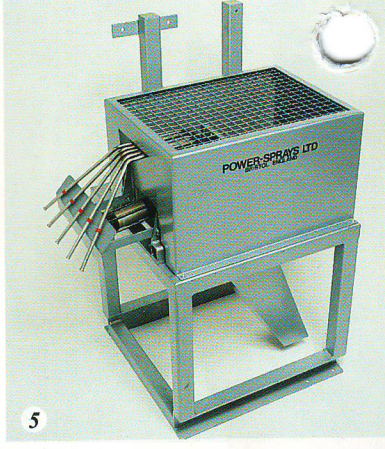
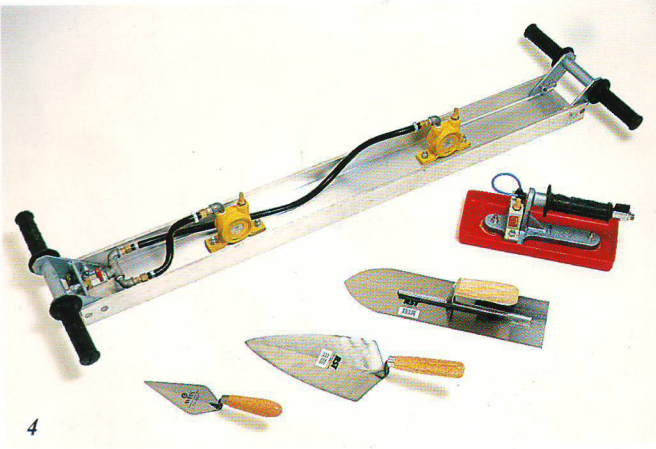
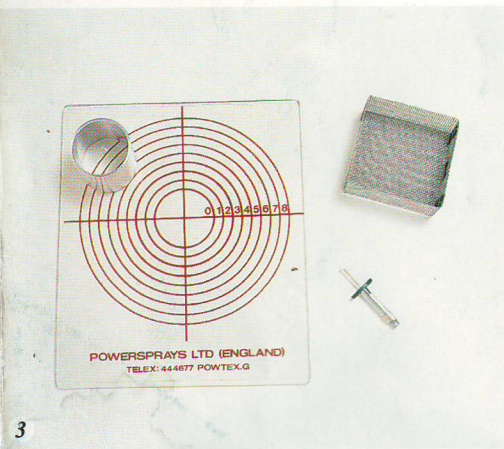
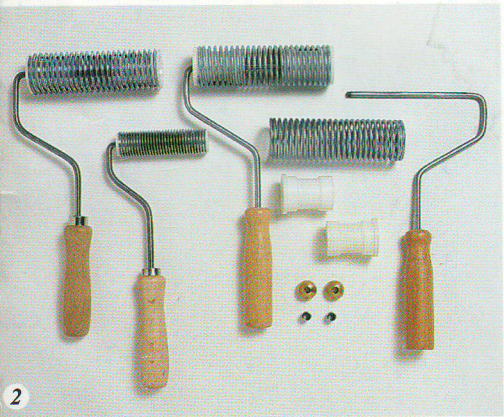


Flow
71 lit/min

ACCESSORIES

Power-Sprays provides a wide range of accessories to support the GRC production processes.

- These include:
- Spring Compaction Rollers
 - Hand Trowels
 - Vibrating Tables, Trowels and Screed Bars
 - GRC Skin Thickness Gauges
 - Laboratory and Testing Equipment
 - Water and Liquid Admixture Dispensers



- Polymer Dispensers
- Glassfibre Usage Monitors
- Materials and Product Conveying Systems
- Glassfibre Choppers
- Floor Scales
- Weighing Systems

For further details on any of the Power-Sprays range please contact either Power-Sprays or your local distributor.

1. Water and Liquid Admixture Dispensers.
2. Spring Compaction Rollers and Spare Parts.
3. Slump Test Kit, Wire Basket and GRC Skin Thickness Gauge.
4. Trowels and Screed Bar.
5. M.R. Glassfibre Chopper.
6. S.R. Glassfibre Chopper.
7. Materials Testing Machine.

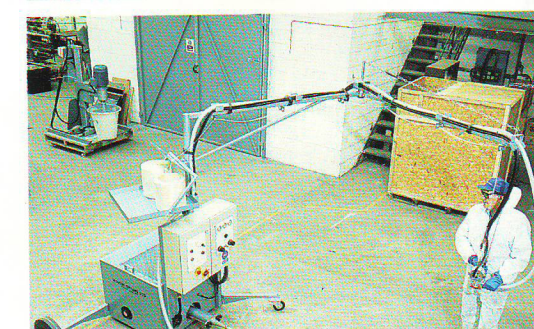
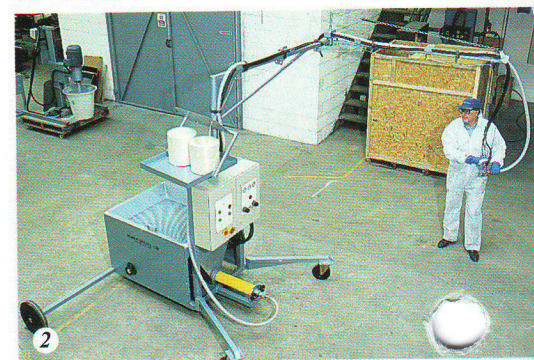


PUMPING

Power-Sprays comprehensive range of pumps includes units for the production of Sprayed GRC, Pumping Premix GRC and Spraying Premix GRC. Pumps are also manufactured for applying aggregate facing mixes and for use on site (eg. spraying GRC renders etc).

All Power-Sprays pump units are based on well proven, tried and tested technology. Normally, heavy duty 3-phase electric drives and infinitely variable speed hydraulic gearboxes are used.

For Sprayed GRC Power-Sprays offers two sizes of progressive cavity rotor/stator pumps - the PS9000 and PS10000 series.



For Premix GRC the 25mm and 38mm multi-roller peristaltic hose pumps have been specifically developed. The elimination of all moving parts in contact with the material makes these units ideal for Pumping and Spraying Premix GRC.

Air and diesel hydraulic powered machines using either rotor/stator or peristaltic pump units are manufactured for use on sites where electricity is not available.

1. PS9000B Spray System.
2. PS10000A Spray Station.
3. 25mm Peristaltic Spray Station.
4. PS4000M Pump.
5. 38mm Peristaltic Pump.
6. PS1000 Pump.
7. PS9000A Spray Station.

SPRAYING

Power-Sprays has developed a comprehensive range of spraying systems specifically for the GRC industry.

For handspray production the modern choice is the Power-Sprays' Lightweight Concentric Sprayhead. The Concentric incorporates a unique system whereby the glassfibre is chopped and mixed with the sand/cement slurry at a single nozzle. This system ensures an even distribution of reinforcement.

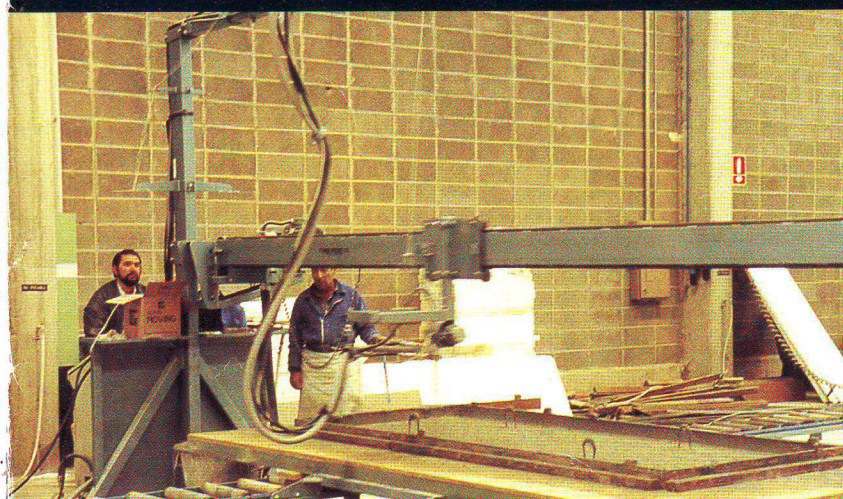
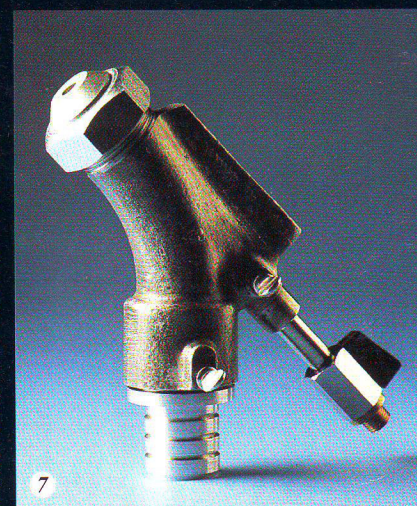
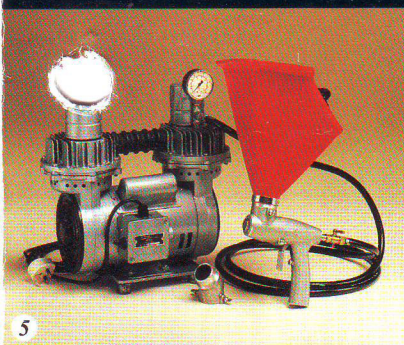
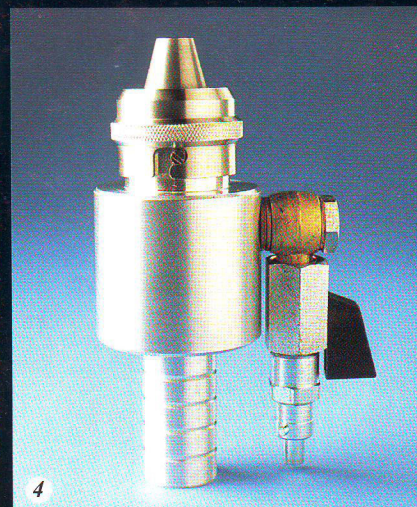
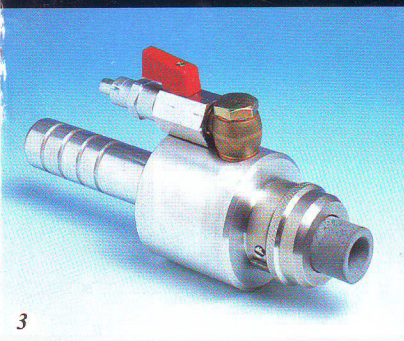
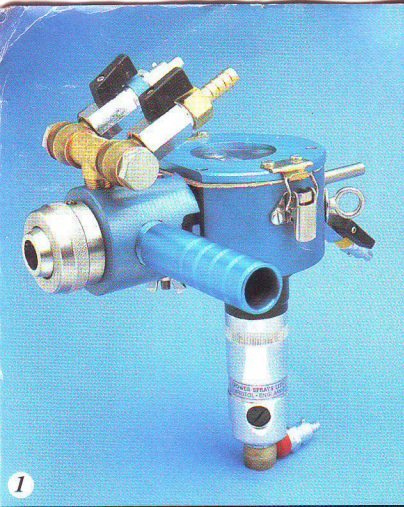
Combination units with separate fibre choppers are also available with a choice of slurry spray guns - the "Lightweight L/W" and the "MK4 Centex".

For Spraying Premix GRC the MK5 gun is recommended.

Power-Sprays also manufactures a choice of spray guns for applying mist coats, aggregate facing mixes and textured surface finishes. For small areas the MK3 Powertex unit is used. On larger areas the pump fed ST1 and P/M guns provide faster output.

In addition to "hand held" spray guns, auto-spray units are manufactured for high output systems.

1. Lightweight Concentric GRC Sprayhead.
2. Combination GRC Spray Unit (with L/W slurry gun).
3. MK5 Premix Spray Gun.
4. ST1 Spray Gun.
5. MK3 Powertex Spray Unit.
6. MK4 Centex Spray Gun.
7. P/M Spray Gun.
8. Auto-Spray Traverse.



PUMPING

Power-Sprays comprehensive range of pumps includes units for the production of Sprayed GRC, Pumping Premix GRC and Spraying Premix GRC. Pumps are also manufactured for applying aggregate facing mixes and for use on site (eg. spraying GRC renders etc).

All Power-Sprays pump units are based on well proven, tried and tested technology. Normally, heavy duty 3-phase electric drives and infinitely variable speed hydraulic gearboxes are used.

For Sprayed GRC Power-Sprays offers two sizes of progressive cavity rotor/stator pumps - the PS9000 and PS10000 series.



For Premix GRC the 25mm and 38mm multi-roller peristaltic hose pumps have been specifically developed. The elimination of all moving parts in contact with the material makes these units ideal for Pumping and Spraying Premix GRC.

Air and diesel hydraulic powered machines using either rotor/stator or peristaltic pump units are manufactured for use on sites where electricity is not available.

1. *PS9000B Spray System.*
 2. *PS10000A Spray Station.*
 3. *25mm Peristaltic Spray Station.*
 4. *PS4000M Pump.*
 5. *38mm Peristaltic Pump.*
 6. *PS1000 Pump.*
 7. *PS9000A Spray Station.*
-

The strength of Sprayed GRC is generally higher than Premix GRC.

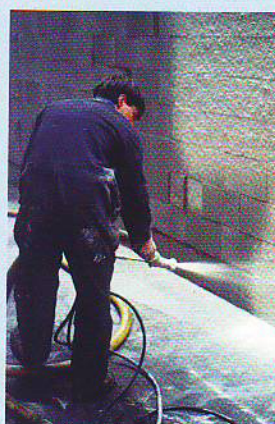
The table below shows typical values for Sprayed GRC and Premix GRC manufactured with 5% and 3% (by weight of mix) alkali resistant glass fibre.

Property	Hand or Machine Spray GRC	Vibration Cast Premix GRC
Glassfibre Content by Weight of Mix	5%	3%
Bending:		
Ultimate Strength (Modulus of Rupture – MOR) MPa	20–30	10–14
Elastic Limit (Limit of Proportionality – LOP) MPa	7–11	5–8
Tension:		
Ultimate Strength (Ultimate Tensile Strength – UTS) MPa	8–11	4–7
Elastic Limit (Bend Over Point – BOP) MPa	5–7	4–6
Shear:		
Interlaminar Shear Strength MPa	3–5	N.A.
In-plane Shear Strength MPa	8–11	4–7
Compressive Strength MPa	50–80	40–60
Impact Strength kJ/m ²	10–25	10–15
Elastic Modulus GPa	10–20	10–20
Strain to Failure %	0.6–1.2	0.1–0.2
Dry Density Tonne/m ³	1.9–2.1	1.8–2.0

Hand Spray
GRC



Spraying Premix
GRC render



Vibration Cast
Premix GRC

